

Our complete design and manufacturing solution offers you more

- Complete in-house product design including:
 - system-level conceptual design
 - software development and verification
 - circuit design and 3D mechanical design
 - full prototyping, testing and validation
 - agency approvals and product compliance
 - extensive internal/external testing
 - world-class resources for product development.

State-of-the-art automated equipment is the backbone of our manufacturing facility. Automated surface-mount and through-hole technologies, conformal coating, encapsulation and in-circuit testing, sophisticated MRP software, value-added assembly, customized packaging and flexible delivery options make us the preferred supplier to industry leaders in many sectors.



ISO 9001:2000

ISO 9001:2000 and Six Sigma certification, combined with our relentless dedication to quality at every step of our process make us a trusted supplier to both domestic and international manufacturers.

Total Acquisition Management™

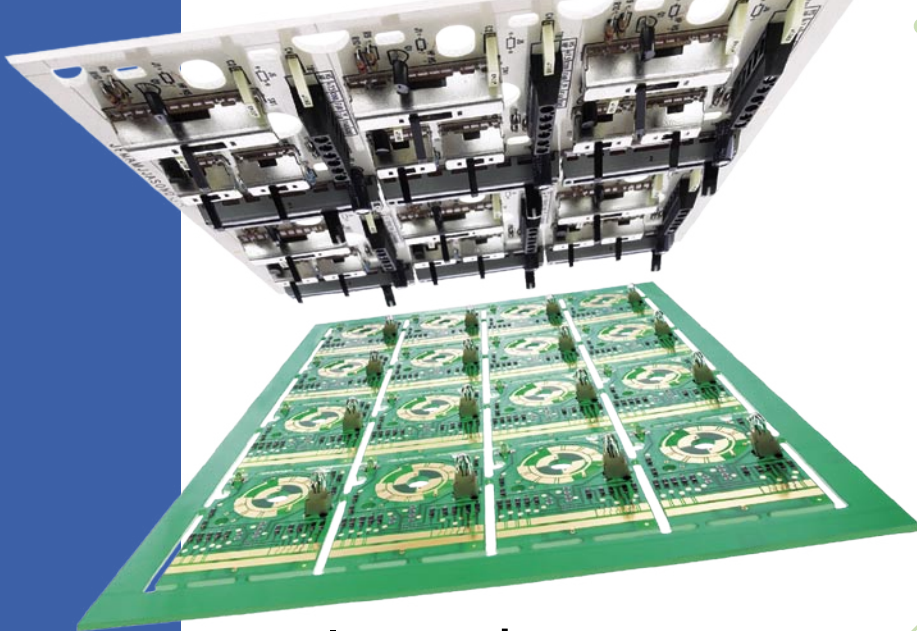
(T.A.M.) and onshore/offshore options simplify your purchase process, manage volume-related variables and streamline logistics.

- Contact Etratech today to discover how our advanced electronic controls can enhance your product line.



Etratech Inc.
1047 Cooke Boulevard
Burlington, Ontario, Canada
L7T 4A8

t 905 681 7544
f 905 681 7601
info@etrtech.com www.etrtech.com



Innovative manufacturing solutions

Etratech brings quality, design and automated manufacturing together in one seamless solution. Competitive pricing, reduced lead times and high material standards are maintained through direct factory OEM negotiating, supplier rating, volume leveraging, negotiated stocking arrangements and bond reserves. Bar code matching of work orders to component lots ensures an error-free start to our process.



High-speed manufacturing is only the beginning

Our manufacturing engineering personnel are involved at all levels of product development to ensure that optimum design-for-manufacture, quality and lowest cost are achieved. Our environmentally controlled facility is designed for efficient movement of materials. Sophisticated MRP software maximizes planning and keeps scheduling flexible. Online access to plans on the manufacturing floor provides staff with controlled data.

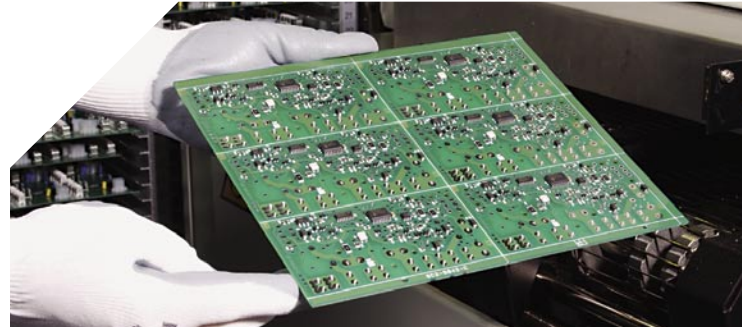
Fully automated processes ensure speed, consistency, quality and reliability. Our high-speed technology, including our S.M.T. Genesis dual-beam line – the first of its kind in Canada – offers onsertion of virtually any component from 0201 chips to non-standard bulbs, relays and connectors at industry-leading speeds.

This technology is complemented by:

- High-speed auto insertion of axial, radial and dip through-hole components.
- Pin-paste reflow technologies, press-fit solderless terminal insertion and automated odd-form assembly.
- Automated, environmentally friendly wave soldering.
- In-line process inspection for fast turnaround.
- In-line testing to verify parametrics and integrity.
- Selective conformal coating and encapsulation.
- Automated final testing and date-coding of parts.
- Box-build assembly with integrated final testing.
- Pre-shipping final audit and approval for all orders.
- Customized returnable packaging to optimize box space and product protection, while respecting the environment and lowering costs for our customers.



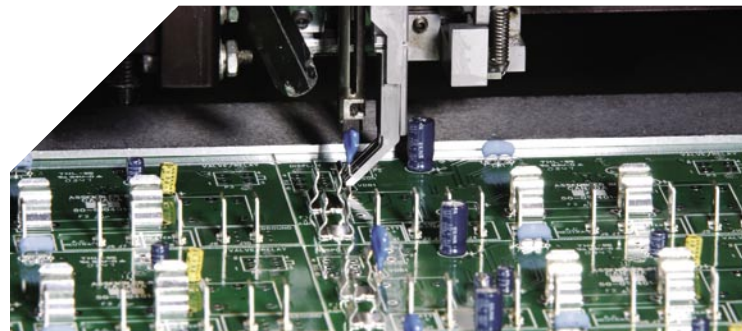
State-of-the-art S.M.T. Genesis dual-beam technology.



Advanced lead-free compatible reflow oven.



In-line conformal coating and encapsulation of circuitry.



Automated through-hole component insertion.



In-line testing to ensure a high degree of reliability.